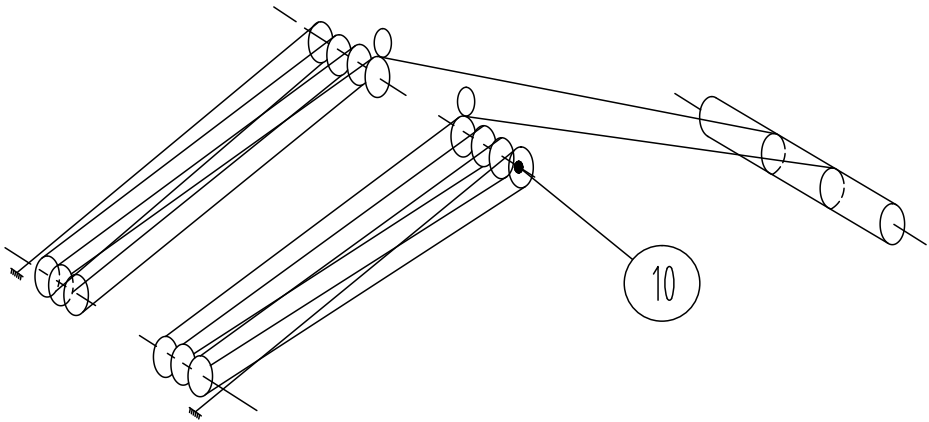


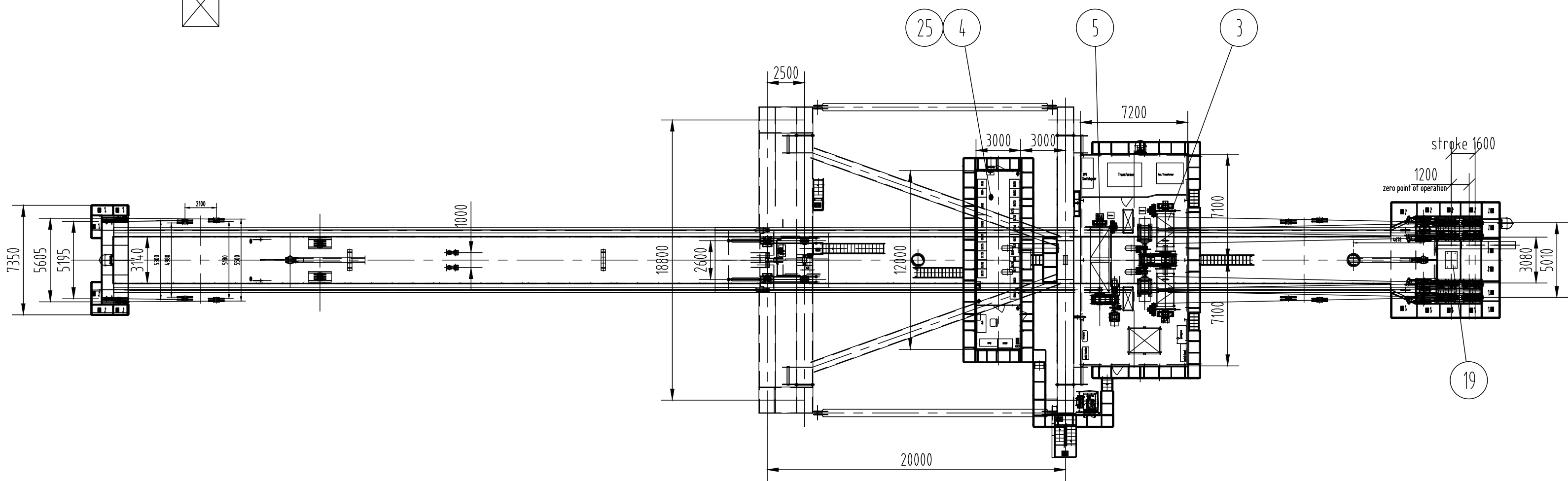
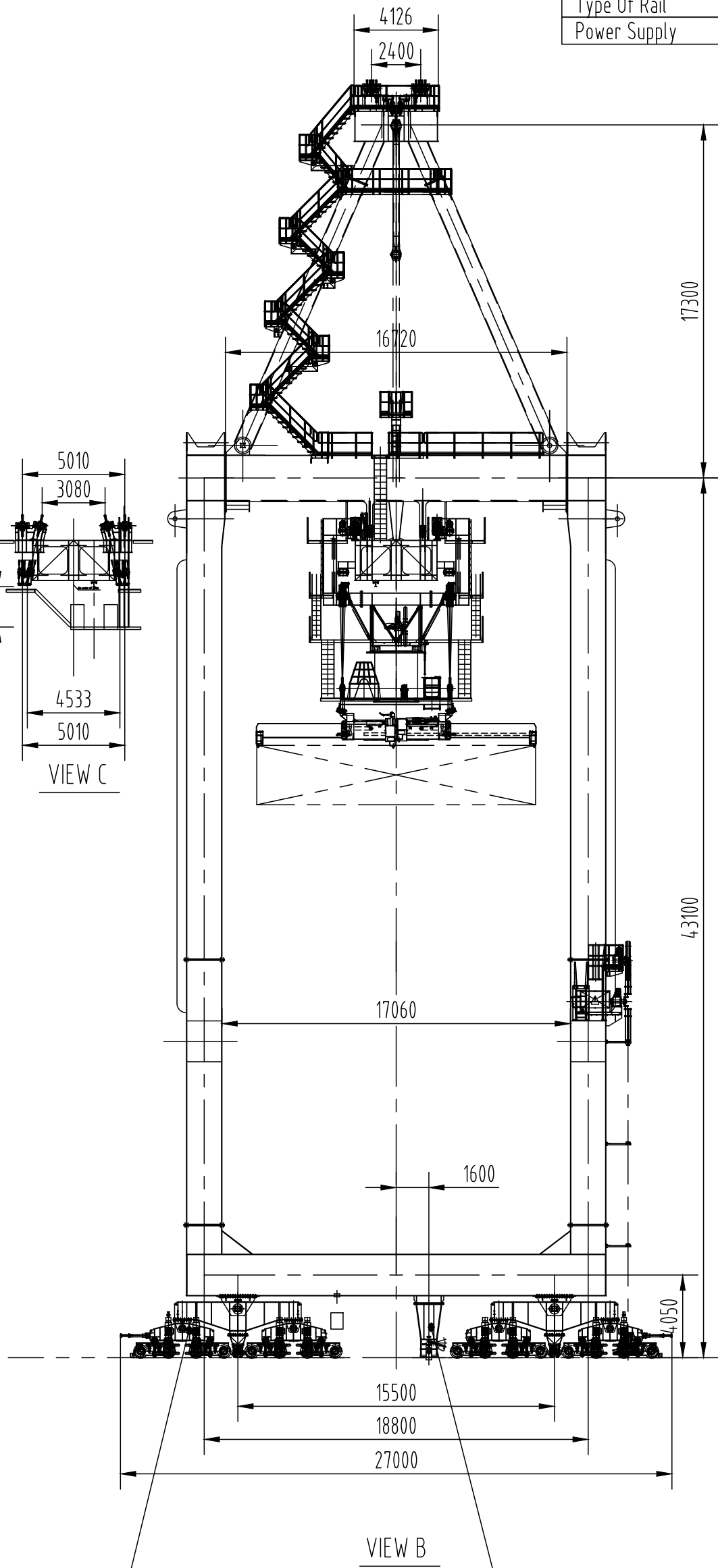
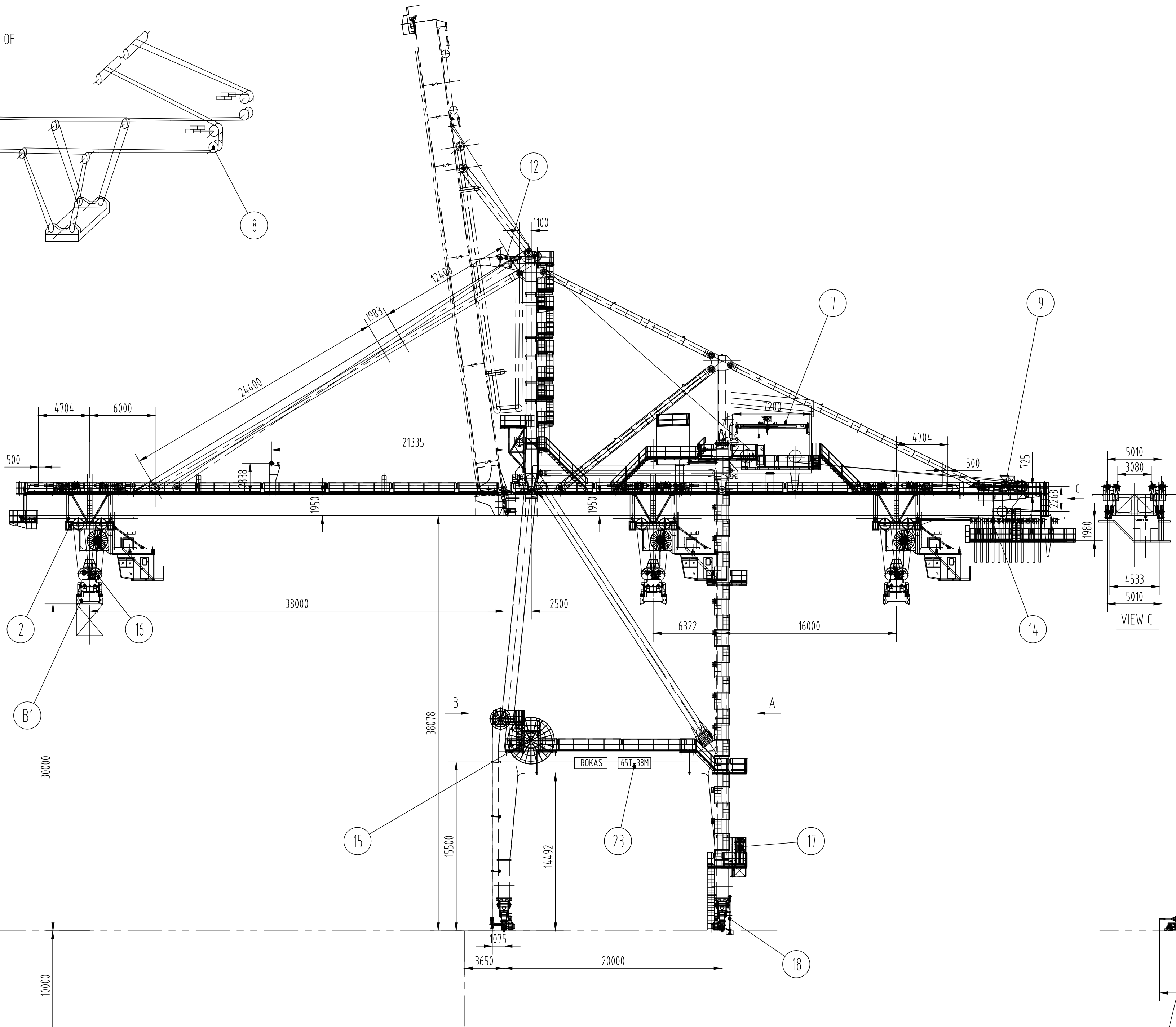
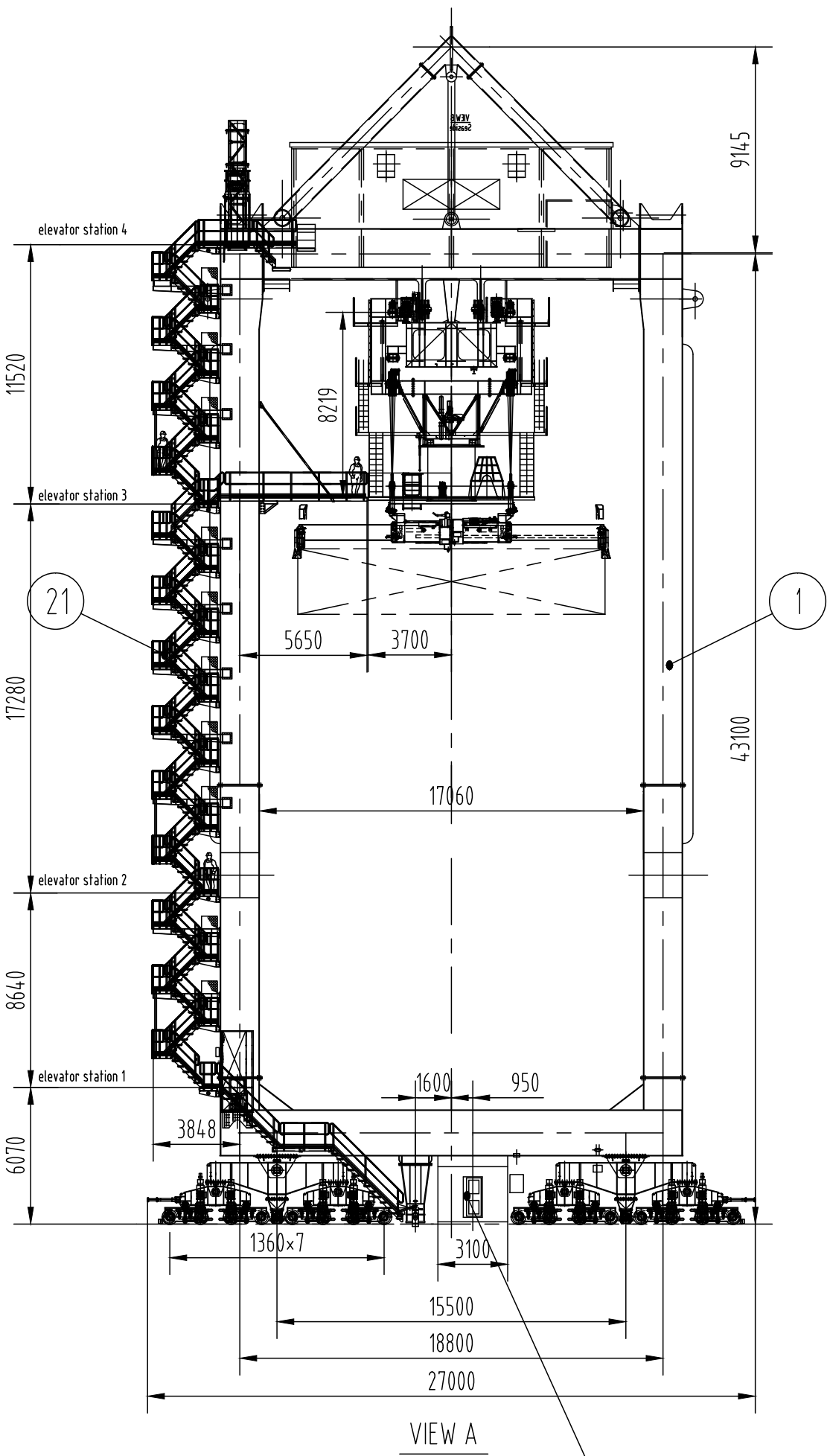
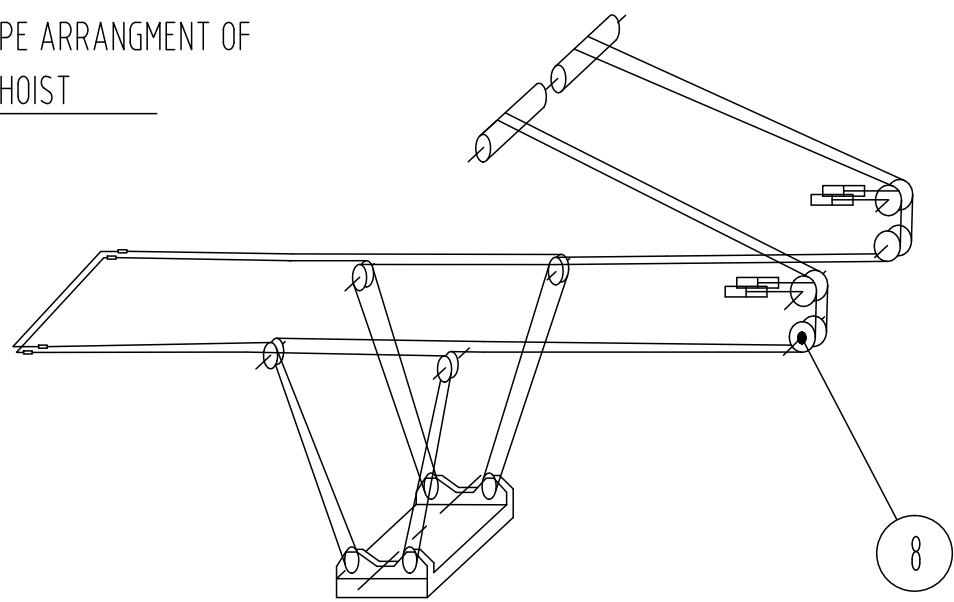
MAIN TECHNICAL FEATURE

Rated Hoisting Capacity	Single Lift, Under Spreader	50t
	Twin Lift, Under Spreader	65t
Trolley Reach	Outreach	38m
	Backreach	16m
Rail Gauge	25m	
Rated Hoisting Height	Above Rail	30
	Under Rail	10m
	Total Hoisting Height	40m
Hoisting Mechanism	65t Load Speed	60m/min
	Empty Load Speed	120m/min
	Motor Power	2x413KW
Trolley Mechanism	Trolley Speed	180m/min
	Motor Power	4x41KW
	Gantry Speed	45m/min
Gantry Mechanism	Motor Power	16X215KW
	Boom Luffing Cycle	<5MIN/CYCLE
	Motor Power	91KW
Trim List and skew	±5°	
Wheel No.	32	Driving Wheel No. 16
Max wheel Pressure	500KN	
Type Of Rail	A100 DIN536	
Power Supply	3-phase,20kv,50hz	

ROPE ARRANGMENT OF  
BOOM HOIST



ROPE ARRANGMENT OF  
HOIST



1	2009-09-02	IKONT					
INDEX	DATE	NAME	DESCRIPTION				
CUSTOMER			DATE	NAME	SIGNATURE	SCALE	
PROJECT			DRAWN BY	KONTOGIANNIS		1:250	
S.T.S. PANAMAX (3 Pcs)			CHECKED BY	TSITSIRIGOS			
OBJECT			APPROVED	MANIATIS			
65t-38m STS Container Crane			MATERIAL	Assembly			
WEIGHT			921979				SHEET 1
SAP CODE			SIZE	A1			FROM 1
PROJECT No. 3, RIZARIOU str. - 15233 ATHENS - GREECE			DRAWING No.				REV. 1
TEL. +30-2108771100, FAX +30-2108771121 or 111			F.0013	0000	M5085		
REPLACES			REPLACED BY				